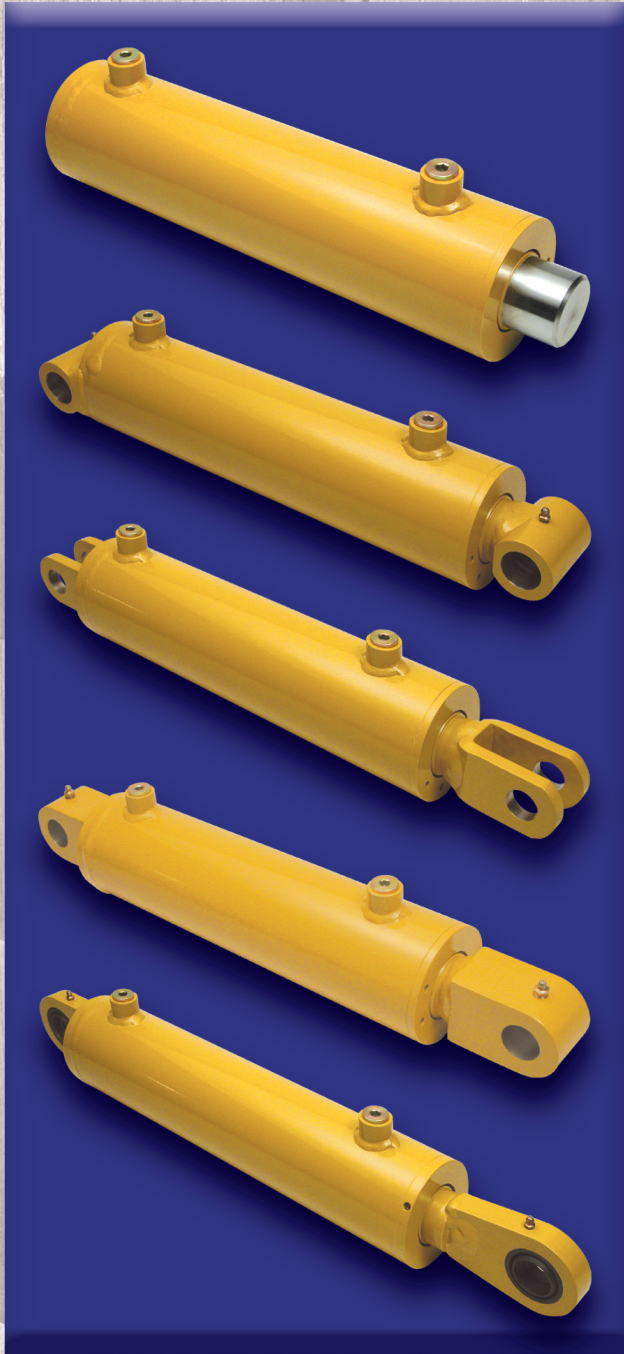


**PRE-ENGINEERED CYLINDERS**



**CYLINDERS ENGINEERED  
TO MOVE YOUR BUSINESS**



**IMPORTANT INFORMATION!**  
Please read the  
"ABOUT THIS CATALOG!"  
on page 3.





## IMPORTANT INFORMATION ABOUT THIS CATALOG!

This catalog has been assembled in a manner to help you specify cylinders for your unique application. These cylinders are pre-engineered using the most common mounting configurations as well as bore to rod combinations.

This cylinder program will provide you with the high quality and high integrity hydraulic cylinders you are looking for. The important cylinder envelope dimensions are illustrated by cylinder Series to assist you in arriving at the best selection for a given application.

You will find two categories of cylinders: 100 Series through 400 Series are Standard Duty with operating pressures to 2500 PSI, 600 Series through 900 Series are Heavy Duty with operating pressures to 3000 PSI. Aggressive Hydraulics has an internal operating system which is configured in a manner that provides a high level of responsiveness for quotes and manufacturing from (1) piece to production quantities.

To use this catalog:

1. Choose the Series of cylinder that best fits your needs considering Standard or Heavy Duty as well as mounting options.
2. Choose the bore and rod diameter combination which is best suited for your application. The horizontal column of what you have chosen will detail all dimensions of that respective cylinder.
3. At the far right of the column, you will see the specific part number of that cylinder. Simply add the stroke you desire and you have completed the process of selecting a Standard Cylinder for your specific application.

If this catalog does not provide ample options for your requirement, refer your request to one of our Sales Engineers to look at a Custom Built Cylinder.

Call toll free @ (866) 466-4100.

Aggressive Hydraulics is here to help you, please call us with any questions or special requests you may have.





# Precision, Performance and Reliability All Engineered To Move Your Business.

## CUSTOMER SERVICE

- We are committed to providing our customers with quality workmanship.
- Our customers receive prompt courteous service.
- From quoting to delivery of product, we pay attention to detail.
- Our staff has both the experience and technical insight to deliver.
- From one piece to production quantities, you will receive short lead times.
- We do not believe an automated telephone answering system works for our business, consequently the personnel who answer our telephone are our Customer Service staff.

## EQUIPMENT & MACHINERY

- Whether it's our custom built machinery or commercially available equipment, we have the best machines for the job.
- Our "focused" facility and equipment is set up solely for the manufacture and support of hydraulic cylinders.
- We do not believe in machine operators loading and unloading parts, we have a staff of seasoned and qualified machinists, welders and hydraulic technicians to maximize the benefits of our equipment and facility.

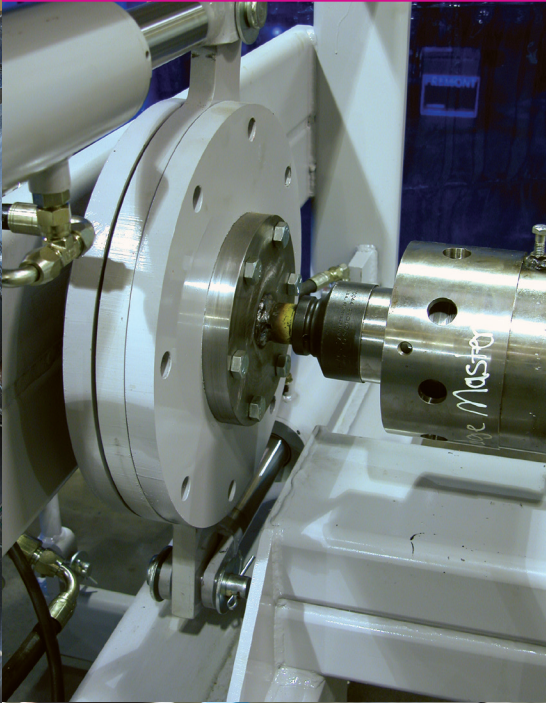
## QUALITY

- All Products are inspected with calibrated gauging to insure that they adhere to our stringent standards.
- Our Quality Assurance means that you can be assured of the highest quality and workmanship in the industry.
- Aggressive Hydraulics adheres to certified weld procedures.
- Quality is not just a department, it's the whole company.
- Quality means more than machining to a blue print, it's also insuring that the part is designed properly to match the application.
- Our front office functions are an important facet to the manufacturing process. We have a solid infrastructure with our computer operating systems including CAD, to insure we get it right and deliver on time.



For Cylinders Engineered to move your Business  
Call Toll-free: (866) 406-4100







Bore	Rod	A	B	F	H	I	L	Maximum Stroke	Part #
1.50	0.75	2.00	1.38	5.75	3.31	1.31	#4	18	104-**.**. **
	1.00	2.00	1.50	6.00	3.56	1.31	#4	34	106-**.**. **
Bore	Rod	A	B	F	H	I	L	Maximum Stroke	Part #
2.00	1.00	2.50	1.38	6.25	3.62	1.38	#6	25	110-**.**. **
	1.12	2.50	1.50	6.25	3.62	1.38	#6	31	112-**.**. **
	1.25	2.50	1.50	6.50	3.88	1.38	#6	39	114-**.**. **
Bore	Rod	A	B	F	H	I	L	Maximum Stroke	Part #
2.50	1.25	3.00	1.50	6.50	3.62	1.62	#6	31	118-**.**. **
	1.50	3.00	1.56	7.00	4.06	1.69	#6	45	120-**.**. **
Bore	Rod	A	B	F	H	I	L	Maximum Stroke	Part #
3.00	1.25	3.50	1.56	7.00	4.00	1.75	#8	26	124-**.**. **
	1.50	3.50	1.44	7.00	3.88	1.88	#8	38	126-**.**. **
	1.75	3.50	1.44	7.00	3.88	1.88	#8	52	128-**.**. **
	2.00	3.50	1.44	7.25	4.12	1.88	#8	66	130-**.**. **
Bore	Rod	A	B	F	H	I	L	Maximum Stroke	Part #
3.50	1.50	4.00	1.56	7.25	4.00	2.00	#8	32	134-**.**. **
	1.75	4.00	1.56	7.25	4.00	2.00	#8	44	136-**.**. **
	2.00	4.00	1.56	7.25	4.00	2.00	#8	58	138-**.**. **
Bore	Rod	A	B	F	H	I	L	Maximum Stroke	Part #
4.00	1.50	4.50	1.44	7.25	3.88	2.12	#8	28	142-**.**. **
	1.75	4.50	1.50	7.50	3.94	2.31	#8	39	144-**.**. **
	2.00	4.50	1.50	7.50	3.94	2.31	#8	51	146-**.**. **
	2.50	4.50	1.50	7.75	4.19	2.31	#8	78	148-**.**. **
Bore	Rod	A	B	F	H	I	L	Maximum Stroke	Part #
4.50	1.75	5.00	1.38	7.75	3.81	2.44	#8	34	152-**.**. **
	2.00	5.00	1.38	7.75	3.81	2.44	#8	45	154-**.**. **
	2.25	5.00	1.38	7.75	3.81	2.44	#8	58	156-**.**. **
Bore	Rod	A	B	F	H	I	L	Maximum Stroke	Part #
5.00	2.00	5.62	1.50	8.25	3.94	2.81	#8	40	160-**.**. **
	2.50	5.62	1.50	8.50	4.19	2.81	#8	62	162-**.**. **
	3.00	5.62	1.50	8.50	4.19	2.81	#8	89	164-**.**. **

**Ordering Information:**

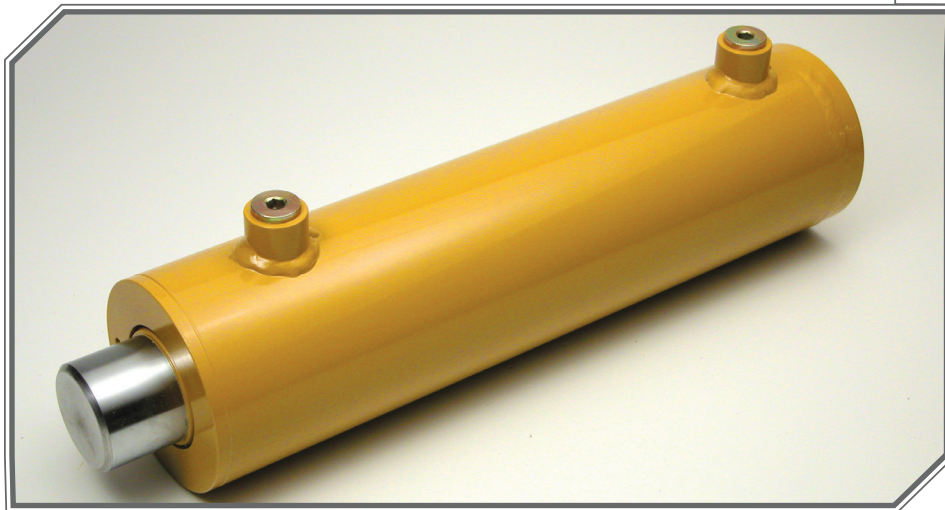
- TO COMPLETE PART#; REPLACE (\*\*.\*\*) WITH STROKE REQUIRED
- OTHER PORT SIZES AND LOCATIONS ARE AVAILABLE UPON REQUEST
- CONSULT FACTORY FOR LONGER STROKE AND OR HIGHER PRESSURE REQUIREMENTS
- MAXIMUM STROKE BASED ON FULL LOAD AT FULL EXTENSION



# 100 SERIES

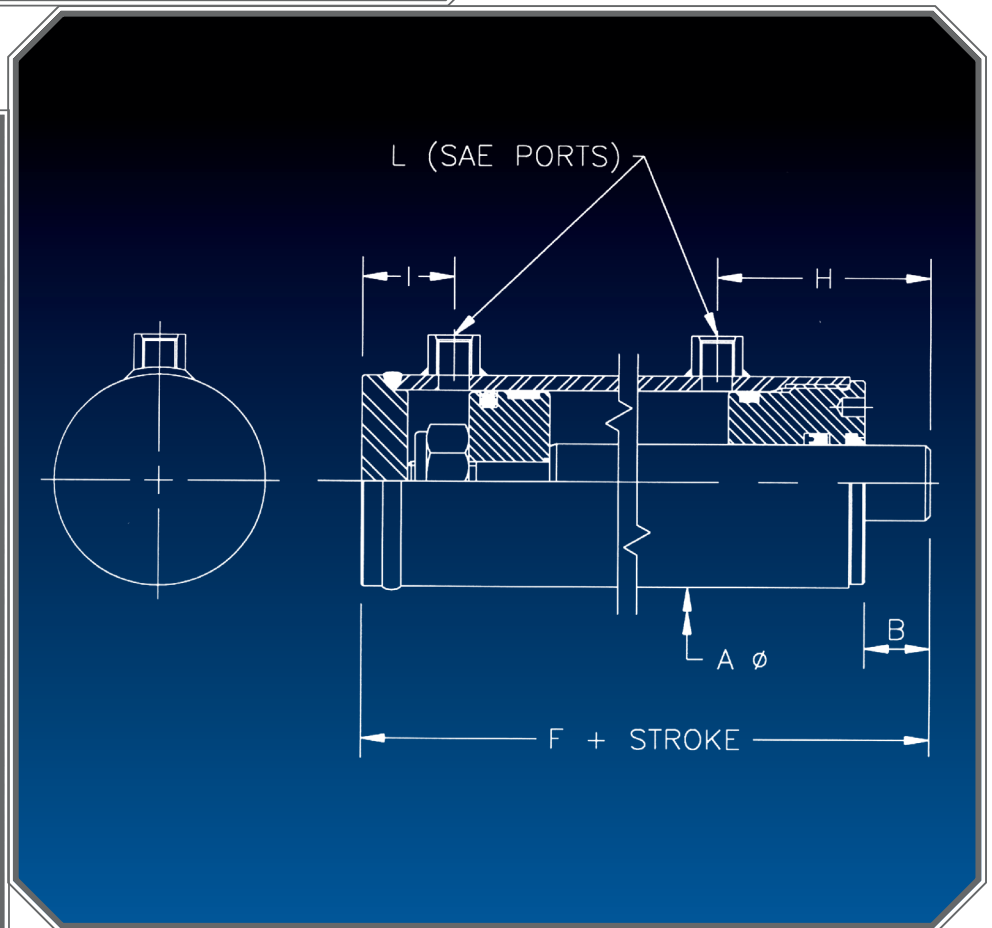
## CYLINDERS

2500 PSI STANDARD DUTY



### FEATURES

- COLD DRAWN (HIGH IMPACT) 75,000 MIN. YIELD D.O.M. TUBING
- GROUND & POLISHED, HARD CHROME PLATED RODS (75,000 min. yield)
- WELDED STYLE CONSTRUCTION CERTIFIED TO A.W.S. B2.1
- INTERNALLY THREADED HEAD DESIGN WITH BUTTRESS THREADS
- HIGHEST QUALITY SEAL CONFIGURATIONS (-40°F to +200°F) COMPATIBLE WITH PETROLEUM BASE FLUIDS
- DUCTILE IRON HEAD GLAND & PISTON
- PISTON UTILIZES WEAR BEARINGS
- NYLON INSERTED LOCK NUT
- STANDARD PAINT; GREY PRIMER



For Cylinders Engineered to move your  
Business Call Toll-free: (866) 406-4100



Bore	Rod	A	B	CD	E	F	G	H	I	J	K	L	Maximum Stroke	Part #
1.50	0.75	2.00	1.31	.750	0.56	6.25	0.62	3.25	1.88	2.50	2.50	#4	18	204-**.**. **
	1.00	2.00	1.19	.750	0.56	6.25	0.62	3.25	1.88	2.50	2.50	#4	34	206-**.**. **

Bore	Rod	A	B	CD	E	F	G	H	I	J	K	L	Maximum Stroke	Part #
2.00	1.00	2.50	1.44	1.000	0.69	7.00	0.75	3.69	2.06	2.50	3.00	#6	25	210-**.**. **
	1.12	2.50	1.56	1.000	0.69	7.00	0.75	3.69	2.06	2.50	3.00	#6	31	212-**.**. **
	1.25	2.50	1.31	1.000	0.69	7.00	0.75	3.69	2.06	2.50	3.00	#6	39	214-**.**. **

Bore	Rod	A	B	CD	E	F	G	H	I	J	K	L	Maximum Stroke	Part #
2.50	1.25	3.00	1.69	1.000	0.81	7.50	0.88	3.81	2.44	2.50	3.25	#6	31	218-**.**. **
	1.50	3.00	1.50	1.000	0.81	7.75	0.88	4.00	2.50	2.50	3.25	#6	45	220-**.**. **

Bore	Rod	A	B	CD	E	F	G	H	I	J	K	L	Maximum Stroke	Part #
3.00	1.25	3.50	1.50	1.000	0.81	7.75	0.88	3.94	2.56	2.50	3.75	#8	26	224-**.**. **
	1.50	3.50	1.38	1.000	0.81	7.75	0.88	3.81	2.69	2.50	3.75	#8	38	226-**.**. **
	1.75	3.50	1.38	1.000	0.81	7.75	0.88	3.81	2.69	2.50	3.75	#8	52	228-**.**. **
	2.00	3.50	1.38	1.000	0.81	8.00	0.88	4.06	2.69	2.50	3.75	#8	66	230-**.**. **

Bore	Rod	A	B	CD	E	F	G	H	I	J	K	L	Maximum Stroke	Part #
3.50	1.50	4.00	1.44	1.250	.88	8.00	1.00	3.88	2.88	2.75	4.25	#8	32	234-**.**. **
	1.75	4.00	1.44	1.250	.88	8.00	1.00	3.88	2.88	2.75	4.25	#8	44	236-**.**. **
	2.00	4.00	1.44	1.250	.88	8.00	1.00	3.88	2.88	2.75	4.25	#8	58	238-**.**. **

Bore	Rod	A	B	CD	E	F	G	H	I	J	K	L	Maximum Stroke	Part #
4.00	1.50	4.50	1.56	1.250	.88	8.25	1.00	4.00	3.00	2.75	4.75	#8	28	242-**.**. **
	1.75	4.50	1.62	1.250	.88	8.50	1.00	4.06	3.19	2.75	4.75	#8	39	244-**.**. **
	2.00	4.50	1.62	1.250	.88	8.50	1.00	4.06	3.19	2.75	4.75	#8	51	246-**.**. **
	2.50	4.50	1.62	1.250	.88	8.75	1.00	4.31	3.19	2.75	4.75	#8	78	248-**.**. **

Bore	Rod	A	B	CD	E	F	G	H	I	J	K	L	Maximum Stroke	Part #
4.50	1.75	5.00	1.50	1.250	.88	8.75	1.00	3.94	3.31	2.75	5.25	#8	34	252-**.**. **
	2.00	5.00	1.50	1.250	.88	8.75	1.00	3.94	3.31	2.75	5.25	#8	45	254-**.**. **
	2.25	5.00	1.50	1.250	.88	8.75	1.00	3.94	3.31	2.75	5.25	#8	58	256-**.**. **

Bore	Rod	A	B	CD	E	F	G	H	I	J	K	L	Maximum Stroke	Part #
5.00	2.00	5.62	1.88	1.500	1.12	9.75	1.25	4.31	3.94	2.75	6.00	#8	40	260-**.**. **
	2.50	5.62	1.88	1.500	1.12	10.00	1.25	4.56	3.94	2.75	6.00	#8	62	262-**.**. **
	3.00	5.62	1.88	1.500	1.12	10.00	1.25	4.56	3.94	4.25	6.00	#8	89	264-**.**. **

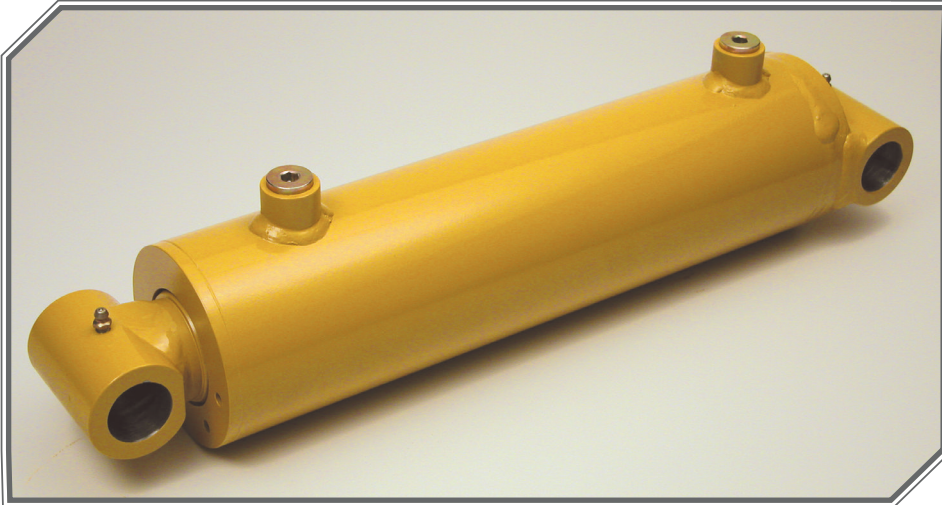
- Ordering Information:**
- **TO COMPLETE PART#:REPLACE (\*\*.\*\*) WITH STROKE REQUIRED**
  - OTHER PORT SIZES AND LOCATIONS ARE AVAILABLE UPON REQUEST
  - CONSULT FACTORY FOR LONGER STROKE AND OR HIGHER PRESSURE APPLICATIONS
  - MAXIMUM STROKE BASED ON FULL LOAD AT FULL EXTENSION



# 200 SERIES

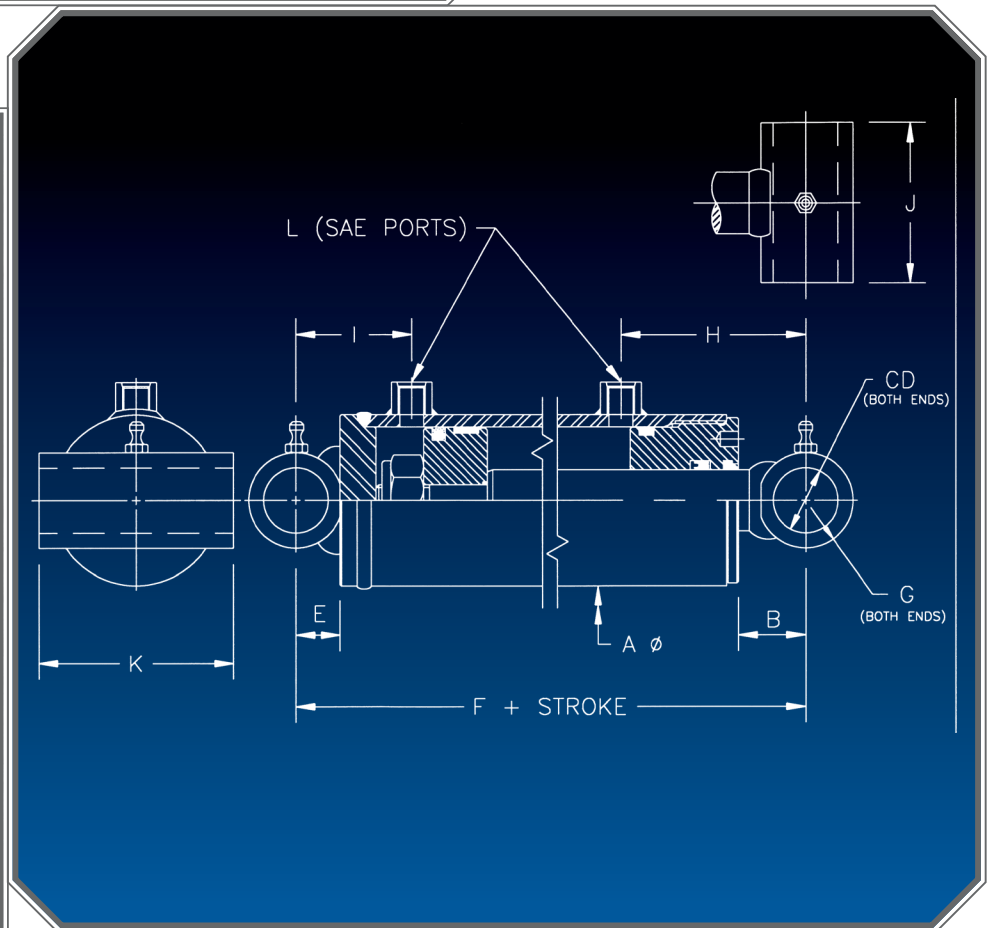
## CYLINDERS

2500 PSI STANDARD DUTY



### FEATURES

- COLD DRAWN (HIGH IMPACT) 75,000 MIN. YIELD D.O.M. TUBING
- GROUND & POLISHED, HARD CHROME PLATED RODS (75,000 min. yield)
- WELDED STYLE CONSTRUCTION CERTIFIED TO A.W.S. B2.1
- INTERNALLY THREADED HEAD DESIGN WITH BUTTRESS THREADS
- HIGHEST QUALITY SEAL CONFIGURATIONS (-40°F to +200°F) COMPATIBLE WITH PETROLEUM BASE FLUIDS
- DUCTILE IRON HEAD GLAND & PISTON
- PISTON UTILIZES WEAR BEARINGS
- NYLON INSERTED LOCK NUT
- STANDARD PAINT; GREY PRIMER



For Cylinders Engineered to move your Business Call Toll-free: (866) 406-4100



Bore	Rod	A	B	CD	E	F	G	H	I	J	K	L	Maximum Stroke	Part #
1.50	0.75	2.00	3.00	.750	1.62	9.00	1.75	4.94	2.94	1.06	0.38	#4	18	304-**.**. **
	1.00	2.00	2.88	.750	1.62	9.00	1.75	4.94	2.94	1.06	.38	#4	34	306-**.**. **

Bore	Rod	A	B	CD	E	F	G	H	I	J	K	L	Maximum Stroke	Part #
2.00	1.00	2.50	3.38	1.00	2.00	10.25	2.00	5.62	3.38	1.25	0.50	#6	25	310-**.**. **
	1.12	2.50	3.50	1.00	2.00	10.25	2.00	5.62	3.38	1.25	0.50	#6	31	312-**.**. **
	1.25	2.50	3.25	1.00	2.00	10.25	2.00	5.62	3.38	1.25	0.50	#6	39	314-**.**. **

Bore	Rod	A	B	CD	E	F	G	H	I	J	K	L	Maximum Stroke	Part #
2.50	1.25	3.00	3.25	1.00	2.00	10.25	2.00	5.38	3.62	1.25	0.50	#6	31	318-**.**. **
	1.50	3.00	3.06	1.00	2.00	10.25	2.00	5.56	3.44	1.25	0.50	#6	45	320-**.**. **

Bore	Rod	A	B	CD	E	F	G	H	I	J	K	L	Maximum Stroke	Part #
3.00	1.25	3.50	3.06	1.00	2.00	10.25	2.00	5.50	3.50	1.25	0.50	#8	26	324-**.**. **
	1.50	3.50	3.06	1.00	2.00	10.25	2.00	5.50	3.50	1.25	0.50	#8	38	326-**.**. **
	1.75	3.50	3.06	1.00	2.00	10.25	2.00	5.50	3.50	1.25	0.50	#8	52	328-**.**. **
	2.00	3.50	3.06	1.00	2.00	10.25	2.00	5.75	3.25	1.25	0.50	#8	66	330-**.**. **

Bore	Rod	A	B	CD	E	F	G	H	I	J	K	L	Maximum Stroke	Part #
3.50	1.50	4.00	3.06	1.00	2.00	10.25	2.00	5.50	3.50	1.25	0.50	#8	32	334-**.**. **
	1.75	4.00	3.06	1.00	2.00	10.25	2.00	5.50	3.50	1.25	0.50	#8	44	336-**.**. **
	2.00	4.00	3.06	1.00	2.00	10.25	2.00	5.50	3.50	1.25	0.50	#8	58	338-**.**. **

Bore	Rod	A	B	CD	E	F	G	H	I	J	K	L	Maximum Stroke	Part #
4.00	1.50	4.50	3.06	1.00	2.00	10.25	2.00	5.50	3.50	1.25	0.50	#8	28	342-**.**. **
	1.75	4.50	3.06	1.00	2.00	10.25	2.00	5.50	3.50	1.25	0.50	#8	39	344-**.**. **
	2.00	4.50	3.06	1.00	2.00	10.25	2.00	5.50	3.50	1.25	0.50	#8	51	346-**.**. **
	2.50	4.50	3.25	1.00	2.00	11.25	2.00	5.94	4.06	1.25	0.50	#8	78	348-**.**. **

Bore	Rod	A	B	CD	E	F	G	H	I	J	K	L	Maximum Stroke	Part #
4.50	1.75	5.00	3.38	1.25	2.00	11.75	2.50	5.81	4.44	1.62	0.75	#8	34	352-**.**. **
	2.00	5.00	3.38	1.25	2.00	11.75	2.50	5.81	4.44	1.62	0.75	#8	45	354-**.**. **
	2.25	5.00	3.38	1.25	2.00	11.75	2.50	5.81	4.44	1.62	.75	#8	58	356-**.**. **0

Bore	Rod	A	B	CD	E	F	G	H	I	J	K	L	Maximum Stroke	Part #
5.00	2.00	5.62	4.25	1.50	2.50	13.50	3.00	6.69	5.31	2.12	1.00	#8	40	360-**.**. **
	2.50	5.62	4.25	1.50	2.50	13.75	3.00	6.94	5.31	2.12	1.00	#8	62	362-**.**. **
	3.00	5.62	4.25	1.50	2.50	13.75	3.00	6.94	5.31	2.12	1.00	#8	89	364-**.**. **

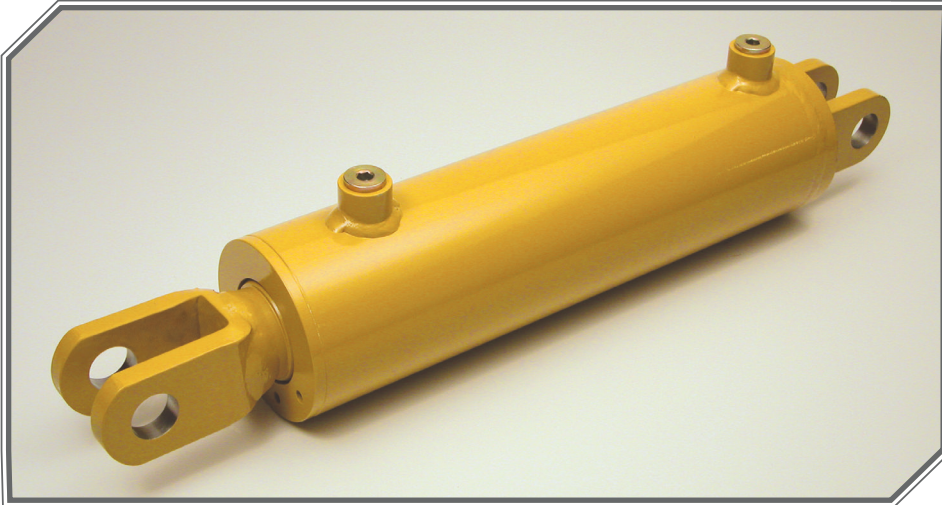
- Ordering Information:**
- **TO COMPLETE PART#:REPLACE (\*\*.\*\*) WITH STROKE REQUIRED**
  - OTHER PORT SIZES AND LOCATIONS ARE AVAILABLE UPON REQUEST
  - CONSULT FACTORY FOR LONGER STROKE AND OR HIGHER PRESSURE APPLICATIONS
  - MAXIMUM STROKE BASED ON FULL LOAD AT FULL EXTENSION



# 300 SERIES

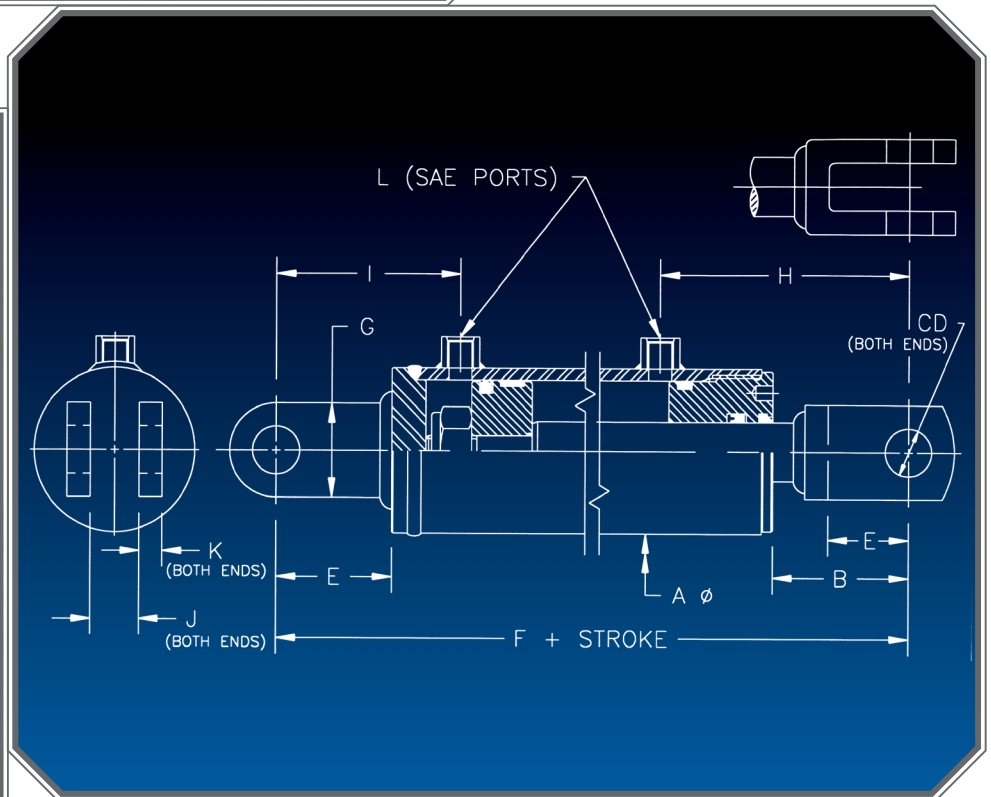
## CYLINDERS

2500 PSI STANDARD DUTY



### FEATURES

- COLD DRAWN (HIGH IMPACT) 75,000 MIN. YIELD D.O.M. TUBING
- GROUND & POLISHED, HARD CHROME PLATED RODS (75,000 min. yield)
- WELDED STYLE CONSTRUCTION CERTIFIED TO A.W.S. B2.1
- INTERNALLY THREADED HEAD DESIGN WITH BUTTRESS THREADS
- HIGHEST QUALITY SEAL CONFIGURATIONS (-40°F to +200°F) COMPATIBLE WITH PETROLEUM BASE FLUIDS
- DUCTILE IRON HEAD GLAND & PISTON
- PISTON UTILIZES WEAR BEARINGS
- NYLON INSERTED LOCK NUT
- STANDARD PAINT; GREY PRIMER



For Cylinders Engineered to move your Business Call Toll-free: (866) 406-4100



Bore	Rod	A	B	CD	E	F	G	H	I	J	K	L	Maximum Stroke	Part #
1.50	0.75	2.00	2.12	.750	1.50	8.00	0.75	4.06	2.81	0.75	0.75	#4	18	404-**.**. **
	1.00	2.00	2.00	.750	1.50	8.00	0.75	4.06	2.81	1.00	1.00	#4	34	406-**.**. **

Bore	Rod	A	B	CD	E	F	G	H	I	J	K	L	Maximum Stroke	Part #
2.00	1.00	2.50	2.62	1.00	2.00	9.50	1.00	4.88	3.38	1.00	1.00	#6	25	410-**.**. **
	1.12	2.50	2.75	1.00	2.00	9.50	1.00	4.88	3.38	1.25	1.25	#6	31	412-**.**. **
	1.25	2.50	2.50	1.00	2.00	9.50	1.00	4.88	3.38	1.25	1.25	#6	39	414-**.**. **

Bore	Rod	A	B	CD	E	F	G	H	I	J	K	L	Maximum Stroke	Part #
2.50	1.25	3.00	2.75	1.00	2.00	9.75	1.00	4.88	3.62	1.25	1.25	#6	31	418-**.**. **
	1.50	3.00	2.56	1.00	2.00	10.00	1.00	5.06	3.69	1.50	1.50	#6	45	420-**.**. **

Bore	Rod	A	B	CD	E	F	G	H	I	J	K	L	Maximum Stroke	Part #
3.00	1.25	3.50	2.81	1.00	2.00	10.25	1.00	5.25	3.75	1.25	1.25	#8	26	424-**.**. **
	1.50	3.50	2.69	1.00	2.00	10.25	1.00	5.12	3.88	1.50	1.50	#8	38	426-**.**. **
	1.75	3.50	2.69	1.00	2.00	10.25	1.00	5.12	3.88	1.75	1.75	#8	52	428-**.**. **
	2.00	3.50	2.69	1.00	2.00	10.50	1.00	5.38	3.88	2.00	2.00	#8	66	430-**.**. **

Bore	Rod	A	B	CD	E	F	G	H	I	J	K	L	Maximum Stroke	Part #
3.50	1.50	4.00	3.06	1.25	2.50	11.25	1.25	5.50	4.50	1.50	1.50	#8	32	434-**.**. **
	1.75	4.00	3.06	1.25	2.50	11.25	1.25	5.50	4.50	1.75	1.75	#8	44	436-**.**. **
	2.00	4.00	3.06	1.25	2.50	11.25	1.25	5.50	4.50	2.00	2.00	#8	58	438-**.**. **

Bore	Rod	A	B	CD	E	F	G	H	I	J	K	L	Maximum Stroke	Part #
4.00	1.50	4.50	3.19	1.25	2.50	11.50	1.25	5.62	4.62	1.50	1.50	#8	28	442-**.**. **
	1.75	4.50	3.25	1.25	2.50	11.75	1.25	5.69	4.81	1.75	1.75	#8	39	444-**.**. **
	2.00	4.50	3.25	1.25	2.50	11.75	1.25	5.69	4.81	2.00	2.00	#8	51	446-**.**. **
	2.50	4.50	3.25	1.25	2.50	12.00	1.25	5.94	4.81	2.50	2.50	#8	78	448-**.**. **

Bore	Rod	A	B	CD	E	F	G	H	I	J	K	L	Maximum Stroke	Part #
4.50	1.75	5.00	3.12	1.25	2.50	12.00	1.25	5.56	4.94	1.75	1.75	#8	34	452-**.**. **
	2.00	5.00	3.12	1.25	2.50	12.00	1.25	5.56	4.94	2.00	2.00	#8	45	454-**.**. **
	2.25	5.00	3.12	1.25	2.50	12.00	1.25	5.56	4.94	2.50	2.50	#8	58	456-**.**. **

Bore	Rod	A	B	CD	E	F	G	H	I	J	K	L	Maximum Stroke	Part #
5.00	2.00	5.62	3.25	1.50	2.50	12.50	1.50	5.69	5.31	2.00	2.00	#8	40	460-**.**. **
	2.50	5.62	3.25	1.50	2.50	12.75	1.50	5.94	5.31	2.50	2.50	#8	62	462-**.**. **
	3.00	5.62	3.25	1.50	2.50	12.75	1.50	5.94	5.31	3.00	3.00	#8	89	464-**.**. **

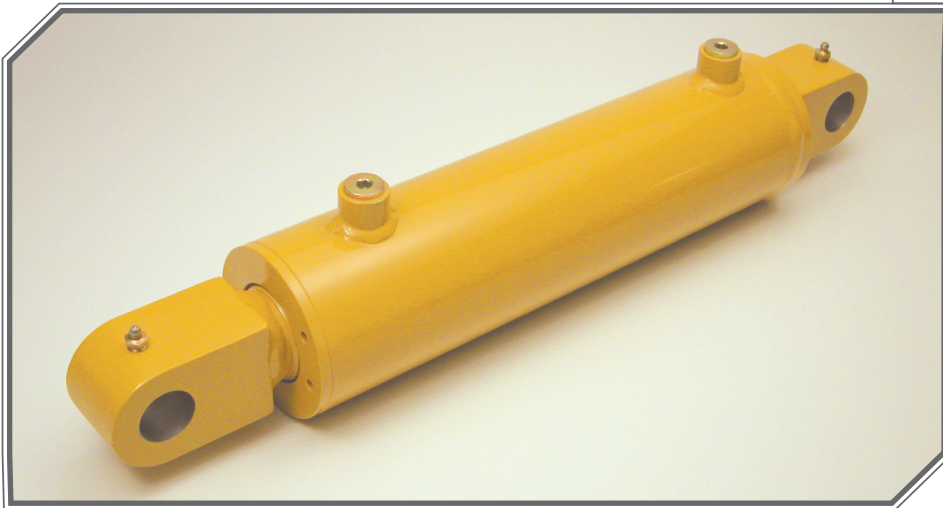
- Ordering Information:**
- **TO COMPLETE PART#:REPLACE (\*\*.\*\*) WITH STROKE REQUIRED**
  - OTHER PORT SIZES AND LOCATIONS ARE AVAILABLE UPON REQUEST
  - CONSULT FACTORY FOR LONGER STROKE AND OR HIGHER PRESSURE APPLICATIONS
  - MAXIMUM STROKE BASED ON FULL LOAD AT FULL EXTENSION



# 400 SERIES

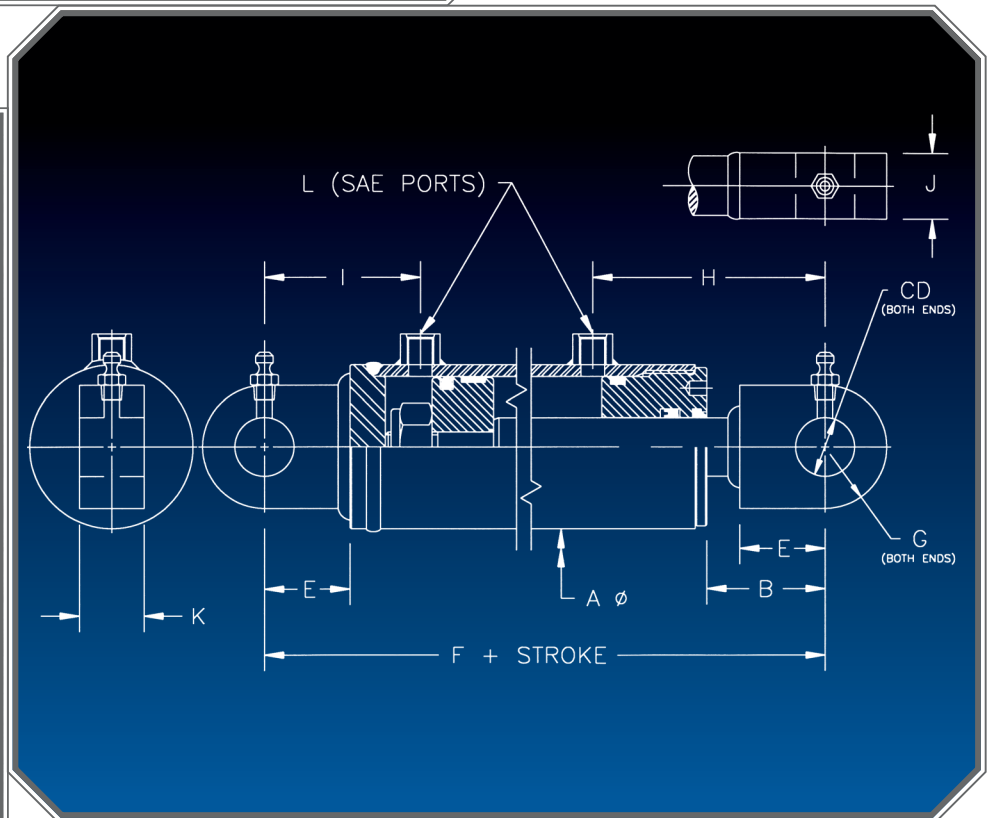
## CYLINDERS

2500 PSI STANDARD DUTY



### FEATURES

- COLD DRAWN (HIGH IMPACT) 75,000 MIN. YIELD D.O.M. TUBING
- GROUND & POLISHED, HARD CHROME PLATED RODS (75,000 min. yield)
- WELDED STYLE CONSTRUCTION CERTIFIED TO A.W.S. B2.1
- INTERNALLY THREADED HEAD DESIGN WITH BUTTRESS THREADS
- HIGHEST QUALITY SEAL CONFIGURATIONS (-40°F to +200°F) COMPATIBLE WITH PETROLEUM BASE FLUIDS
- DUCTILE IRON HEAD GLAND & PISTON
- PISTON UTILIZES WEAR BEARINGS
- NYLON INSERTED LOCK NUT
- STANDARD PAINT; GREY PRIMER



For Cylinders Engineered to move your  
Business Call Toll-free: (866) 406-4100



Bore	Rod	A	B	F	H	I	L	Maximum Stroke	Part #
3.00	1.75	3.50	1.56	8.25	3.94	1.94	#6	47	604-**. **
	2.00	3.50	1.56	8.25	3.94	1.94	#6	53	606-**. **

Bore	Rod	A	B	F	H	I	L	Maximum Stroke	Part #
3.50	1.75	4.00	1.44	8.25	3.88	2.00	#8	40	610-**. **
	2.00	4.00	1.50	8.50	3.94	2.19	#8	52	612-**. **

Bore	Rod	A	B	F	H	I	L	Maximum Stroke	Part #
4.00	2.00	4.62	1.50	9.25	4.56	2.31	#8	46	616-**. **
	2.50	4.62	1.50	9.25	4.56	2.31	#8	72	618-**. **
	3.00	4.62	1.62	10.00	5.44	2.56	#8	99	620-**. **

Bore	Rod	A	B	F	H	I	L	Maximum Stroke	Part #
4.50	2.00	5.12	1.50	9.50	4.62	2.50	#10	40	624-**. **
	2.50	5.12	1.50	9.75	4.62	2.75	#10	64	626-**. **
	3.00	5.12	1.50	9.75	4.62	2.75	#10	90	628-**. **
	3.50	5.12	1.50	10.00	5.38	2.62	#10	115	630-**. **

Bore	Rod	A	B	F	H	I	L	Maximum Stroke	Part #
5.00	2.00	5.62	1.50	9.25	4.44	2.44	#12	36	634-**. **
	2.50	5.62	1.62	10.25	5.00	2.69	#12	57	636-**. **
	3.00	5.62	1.62	10.25	5.00	2.69	#12	82	638-**. **
	3.50	5.62	1.50	10.00	4.88	2.56	#12	108	640-**. **
	4.00	5.62	1.62	10.25	5.56	2.69	#12	130	642-**. **

Bore	Rod	A	B	F	H	I	L	Maximum Stroke	Part #
5.50	2.50	6.12	1.44	10.25	4.81	2.75	#12	52	646-**. **
	3.00	6.12	1.56	10.25	4.94	2.62	#12	75	648-**. **
	3.50	6.12	1.56	10.25	4.94	2.62	#12	100	650-**. **
	4.00	6.12	1.69	10.50	5.06	2.75	#12	124	652-**. **
	4.50	6.12	1.56	11.00	5.50	3.38	#12	144	654-**. **

Bore	Rod	A	B	F	H	I	L	Maximum Stroke	Part #
6.00	2.50	6.75	1.62	10.50	5.00	2.81	#12	48	658-**. **
	3.00	6.75	1.50	10.25	4.88	2.69	#12	70	660-**. **
	3.50	6.75	1.50	10.25	4.88	2.69	#12	94	662-**. **
	4.00	6.75	1.62	10.50	5.00	2.81	#12	120	664-**. **

Bore	Rod	A	B	F	H	I	L	Maximum Stroke	Part #
7.00	2.50	8.00	1.69	11.25	5.62	2.75	#16	40	668-**. **
	3.00	8.00	1.69	11.25	5.62	2.75	#16	60	670-**. **
	3.50	8.00	1.69	11.25	5.62	2.75	#16	82	672-**. **
	4.00	8.00	1.56	11.75	5.50	3.38	#16	107	674-**. **

Bore	Rod	A	B	F	H	I	L	Maximum Stroke	Part #
8.00	3.50	9.00	1.50	13.00	5.69	3.44	#16	71	678-**. **
	4.00	9.00	1.50	13.00	5.69	3.44	#16	94	680-**. **
	4.50	9.00	1.50	13.00	5.69	3.44	#16	118	682-**. **

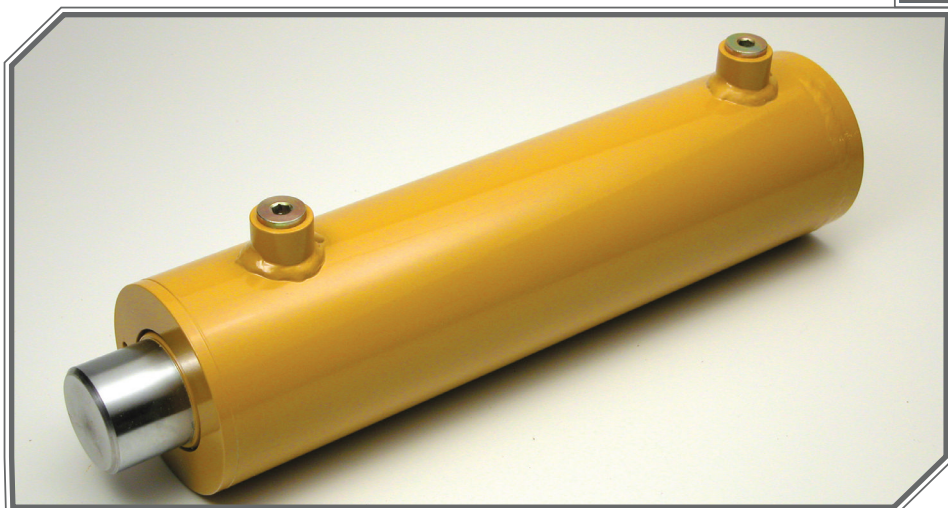
- Ordering Information:**
- **TO COMPLETE PART#:REPLACE (\*\*.\*\*) WITH STROKE REQUIRED**
  - OTHER PORT SIZES AND LOCATIONS ARE AVAILABLE UPON REQUEST
  - CONSULT FACTORY FOR LONGER STROKE AND OR HIGHER PRESSURE APPLICATIONS
  - MAXIMUM STROKE BASED ON FULL LOAD AT FULL EXTENSION



# 600 SERIES

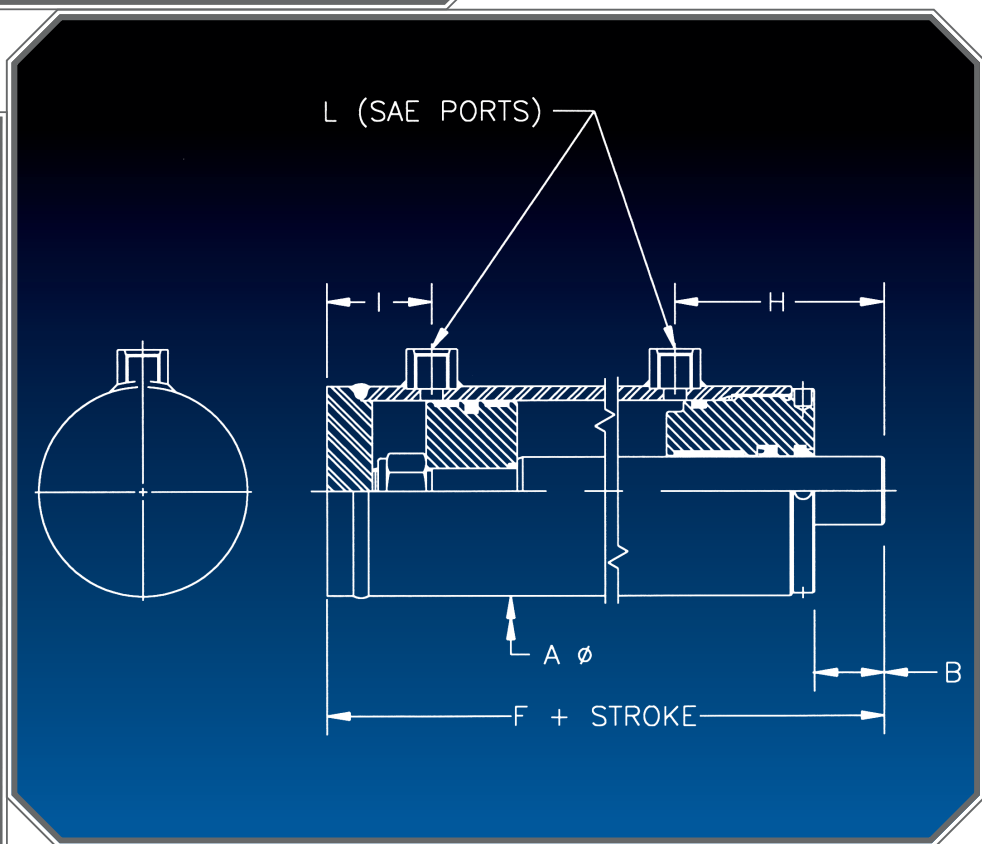
## CYLINDERS

3000 PSI HEAVY DUTY



### FEATURES

- COLD DRAWN (HIGH IMPACT) 75,000 MIN. YIELD D.O.M. TUBING
- GROUND & POLISHED, HARD CHROME PLATED RODS (75,000 min. yield)
- WELDED STYLE CONSTRUCTION CERTIFIED TO A.W.S. B2.1
- INTERNALLY THREADED HEAD DESIGN WITH BUTTRESS THREADS
- HIGHEST QUALITY SEAL CONFIGURATIONS (-40°F to +200°F) COMPATIBLE WITH PETROLEUM BASE FLUIDS
- DUCTILE IRON HEAD GLAND & PISTON
- PISTON UTILIZES WEAR BEARINGS
- NYLON INSERTED LOCK NUT
- STANDARD PAINT; GREY PRIMER



For Cylinders Engineered to move your  
Business Call Toll-free: (866) 406-4100



Bore	Rod	A	B	CD	E	F	G	H	I	J	K	L	Maximum Stroke	Part #
3.00	1.75	3.50	1.50	1.000	0.81	9.00	0.88	3.88	2.75	2.75	3.75	#6	47	704-**.**. **
	2.00	3.50	1.50	1.000	0.81	9.00	0.88	3.88	2.75	2.75	3.75	#6	53	706-**.**. **
3.50	1.75	4.00	1.56	1.250	0.88	9.25	1.00	4.00	2.88	3.25	4.25	#8	40	710-**.**. **
	2.00	4.00	1.62	1.250	0.88	9.50	1.00	4.06	3.06	3.25	4.25	#8	52	712-**.**. **
4.00	2.00	4.62	2.12	1.500	1.12	11.00	1.25	5.19	3.44	3.00	4.75	#8	46	716-**.**. **
	2.50	4.62	2.12	1.500	1.12	11.00	1.25	5.19	3.44	3.00	4.75	#8	72	718-**.**. **
	3.00	4.62	2.00	1.500	1.12	11.50	1.25	5.81	3.69	4.25	4.75	#8	99	720-**.**. **
4.50	2.00	5.12	1.88	1.500	1.12	11.00	1.25	5.00	3.62	3.00	5.50	#10	40	724-**.**. **
	2.50	5.12	2.12	1.500	1.12	11.50	1.25	5.25	3.88	3.00	5.50	#10	64	726-**.**. **
	3.00	5.12	2.12	1.500	1.12	11.50	1.25	5.25	3.88	4.25	5.50	#10	90	728-**.**. **
	3.50	5.12	2.12	1.500	1.12	11.75	1.25	6.00	3.75	4.25	5.50	#10	115	730-**.**. **
5.00	2.00	5.62	2.25	1.750	1.25	11.25	1.38	5.19	3.69	3.25	6.00	#12	36	734-**.**. **
	2.50	5.62	2.12	1.750	1.25	12.00	1.38	5.50	3.94	3.25	6.00	#12	57	736-**.**. **
	3.00	5.62	2.12	1.750	1.25	12.00	1.38	5.50	3.94	4.75	6.00	#12	82	738-**.**. **
	3.50	5.62	2.00	1.750	1.25	11.75	1.38	5.38	3.81	4.75	6.00	#12	108	740-**.**. **
	4.00	5.62	2.12	1.750	1.25	12.00	1.38	6.06	3.94	4.75	6.00	#12	130	742-**.**. **
5.50	2.50	6.12	2.19	1.750	1.25	12.25	1.38	5.56	4.00	3.25	7.00	#12	52	746-**.**. **
	3.00	6.12	2.06	1.750	1.25	12.00	1.38	5.44	3.88	4.75	7.00	#12	75	748-**.**. **
	3.50	6.12	2.06	1.750	1.25	12.00	1.38	5.44	3.88	4.75	7.00	#12	100	750-**.**. **
	4.00	6.12	2.19	1.750	1.25	12.25	1.38	5.56	4.00	4.75	7.00	#12	124	752-**.**. **
	4.50	6.12	2.06	1.750	1.25	12.75	1.38	6.00	4.62	5.50	7.00	#12	144	754-**.**. **
6.00	2.50	6.75	2.25	2.000	1.38	12.50	1.50	5.62	4.19	3.50	7.00	#12	48	758-**.**. **
	3.00	6.75	2.12	2.000	1.38	12.25	1.50	5.50	4.06	3.50	7.00	#12	70	760-**.**. **
	3.50	6.75	2.12	2.000	1.38	12.25	1.50	5.50	4.06	4.75	7.00	#12	94	762-**.**. **
	4.00	6.75	2.25	2.000	1.38	12.50	1.50	5.62	4.19	5.50	7.00	#12	120	764-**.**. **
7.00	2.50	8.00	2.81	2.500	1.62	14.00	1.75	6.75	4.38	5.00	8.25	#16	40	768-**.**. **
	3.00	8.00	2.81	2.500	1.62	14.00	1.75	6.75	4.38	5.00	8.25	#16	60	770-**.**. **
	3.50	8.00	2.81	2.500	1.62	14.00	1.75	6.75	4.38	5.00	8.25	#16	82	772-**.**. **
	4.00	8.00	2.69	2.500	1.62	14.50	1.75	6.62	5.00	5.00	8.25	#16	107	774-**.**. **
8.00	3.50	9.00	2.88	3.000	1.88	16.25	2.00	7.06	5.31	5.00	9.25	#16	71	778-**.**. **
	4.00	9.00	2.88	3.000	1.88	16.25	2.00	7.06	5.31	5.00	9.25	#16	94	780-**.**. **
	4.50	9.00	2.88	3.000	1.88	16.25	2.00	7.06	5.31	5.00	9.25	#16	118	782-**.**. **

**Ordering Information:**

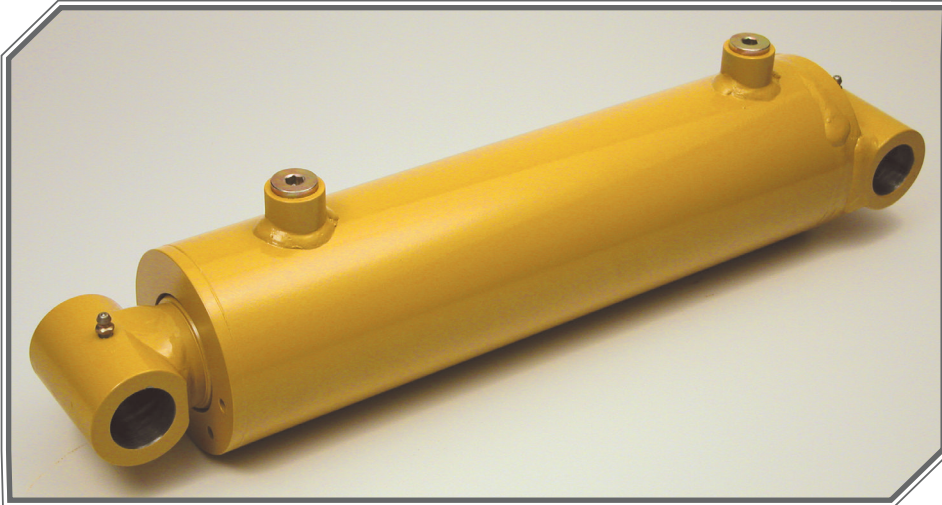
- **TO COMPLETE PART#:REPLACE (\*\*.\*\*\*) WITH STROKE REQUIRED**
- OTHER PORT SIZES AND LOCATIONS ARE AVAILABLE UPON REQUEST
- CONSULT FACTORY FOR LONGER STROKE AND OR HIGHER PRESSURE APPLICATIONS
- MAXIMUM STROKE BASED ON FULL LOAD AT FULL EXTENSION



# 700 SERIES

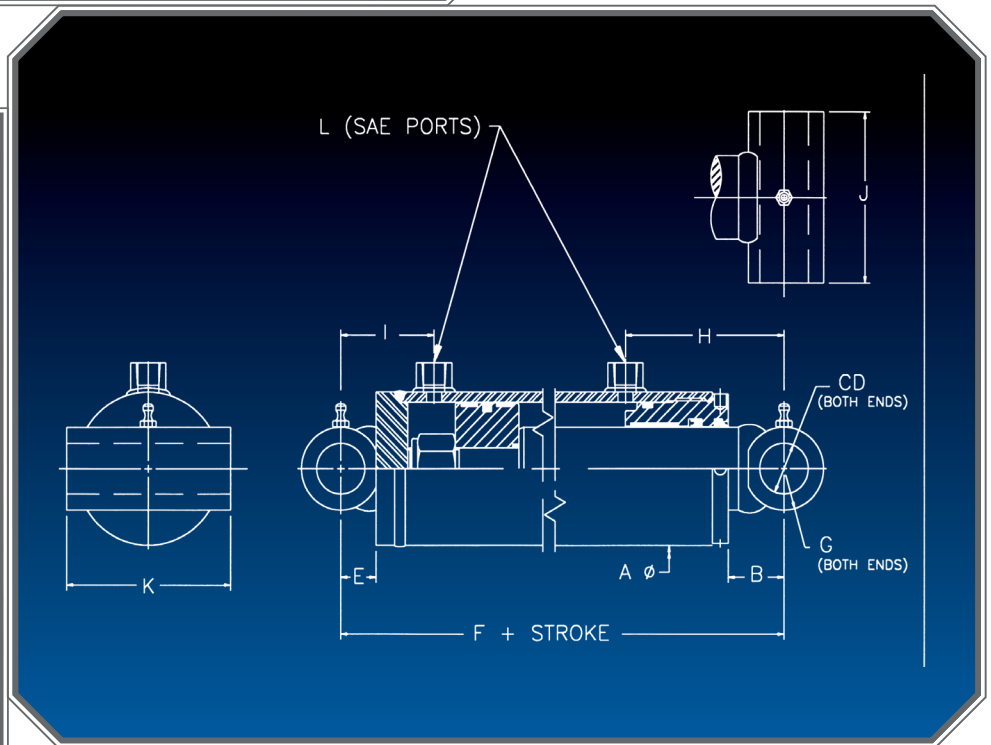
## CYLINDERS

3000 PSI HEAVY DUTY



### FEATURES

- COLD DRAWN (HIGH IMPACT) 75,000 MIN. YIELD D.O.M. TUBING
- GROUND & POLISHED, HARD CHROME PLATED RODS (75,000 min. yield)
- WELDED STYLE CONSTRUCTION CERTIFIED TO A.W.S. B2.1
- INTERNALLY THREADED HEAD DESIGN WITH BUTTRESS THREADS
- HIGHEST QUALITY SEAL CONFIGURATIONS (-40°F to +200°F) COMPATIBLE WITH PETROLEUM BASE FLUIDS
- DUCTILE IRON HEAD GLAND & PISTON
- PISTON UTILIZES WEAR BEARINGS
- NYLON INSERTED LOCK NUT
- STANDARD PAINT; GREY PRIMER



For Cylinders Engineered to move your  
Business Call Toll-free: (866) 406-4100



Bore	Rod	A	B	CD	E	F	G	H	I	J	K	L	Maximum Stroke	Part #
3.00	1.75	3.50	3.31	1.000	2.00	12.00	2.00	5.75	3.94	1.25	0.50	#6	47	804-**.**. **
	2.00	3.50	3.31	1.000	2.00	12.00	2.00	5.75	3.94	1.25	0.50	#6	53	806-**.**. **

Bore	Rod	A	B	CD	E	F	G	H	I	J	K	L	Maximum Stroke	Part #
3.50	1.75	4.00	3.81	1.250	2.00	12.50	2.50	6.31	4.00	1.62	0.75	#8	40	810-**.**. **
	2.00	4.00	3.50	1.250	2.00	12.50	2.50	5.94	4.69	1.62	0.75	#8	52	812-**.**. **

Bore	Rod	A	B	CD	E	F	G	H	I	J	K	L	Maximum Stroke	Part #
4.00	2.00	4.62	4.25	1.500	2.00	14.00	3.00	7.31	4.31	1.62	1.00	#8	46	816-**.**. **
	2.50	4.62	4.25	1.500	2.00	14.00	3.00	7.31	4.31	1.62	1.00	#8	72	818-**.**. **
	3.00	4.62	4.12	1.500	2.00	14.50	3.00	7.94	4.56	1.62	1.00	#8	99	820-**.**. **

Bore	Rod	A	B	CD	E	F	G	H	I	J	K	L	Maximum Stroke	Part #
4.50	2.00	5.12	4.25	1.500	2.00	14.25	3.00	7.38	4.50	1.62	1.00	#10	40	824-**.**. **
	2.50	5.12	4.00	1.500	2.00	14.25	3.00	7.12	4.75	1.62	1.00	#10	64	826-**.**. **
	3.00	5.12	4.00	1.500	2.00	14.25	3.00	7.12	4.75	1.62	1.00	#10	90	828-**.**. **
	3.50	5.12	4.00	1.500	2.00	14.50	3.00	7.88	4.62	1.62	1.00	#10	115	830-**.**. **

Bore	Rod	A	B	CD	E	F	G	H	I	J	K	L	Maximum Stroke	Part #
5.00	2.00	5.62	4.25	1.750	2.25	14.25	3.50	7.19	4.69	2.12	1.00	#12	36	834-**.**. **
	2.50	5.62	4.12	1.750	2.25	15.00	3.50	7.50	4.94	2.12	1.00	#12	57	836-**.**. **
	3.00	5.62	4.12	1.750	2.25	15.00	3.50	7.50	4.94	2.12	1.00	#12	82	838-**.**. **
	3.50	5.62	4.25	1.750	2.25	15.00	3.50	7.62	4.81	2.12	1.00	#12	108	840-**.**. **
	4.00	5.62	4.12	1.750	2.25	15.00	3.50	8.06	4.94	2.12	1.00	#12	130	842-**.**. **

Bore	Rod	A	B	CD	E	F	G	H	I	J	K	L	Maximum Stroke	Part #
5.50	2.50	6.12	4.44	1.750	2.25	15.50	3.50	7.81	5.00	2.12	1.25	#12	52	846-**.**. **
	3.00	6.12	4.56	1.750	2.25	15.50	3.50	7.94	4.88	2.12	1.25	#12	75	848-**.**. **
	3.50	6.12	4.56	1.750	2.25	15.50	3.50	7.94	4.88	2.12	1.25	#12	100	850-**.**. **
	4.00	6.12	4.44	1.750	2.25	15.50	3.50	7.81	5.00	2.12	1.25	#12	124	852-**.**. **
	4.50	6.12	4.56	1.750	2.25	16.25	3.50	8.50	5.63	2.12	1.25	#12	144	854-**.**. **

Bore	Rod	A	B	CD	E	F	G	H	I	J	K	L	Maximum Stroke	Part #
6.00	2.50	6.75	4.62	2.000	2.50	16.00	4.00	8.00	5.31	2.62	1.25	#12	48	858-**.**. **
	3.00	6.75	4.50	2.000	2.50	15.75	4.00	7.88	5.19	2.62	1.25	#12	70	860-**.**. **
	3.50	6.75	4.50	2.000	2.50	15.75	4.00	7.88	5.19	2.62	1.25	#12	94	862-**.**. **
	4.00	6.75	4.62	2.000	2.50	16.00	4.00	8.00	5.31	2.62	1.25	#12	120	864-**.**. **

Bore	Rod	A	B	CD	E	F	G	H	I	J	K	L	Maximum Stroke	Part #
7.00	2.50	8.00	5.19	2.500	3.00	17.75	5.00	9.12	5.75	2.62	1.25	#16	40	868-**.**. **
	3.00	8.00	5.19	2.500	3.00	17.75	5.00	9.12	5.75	2.62	1.25	#16	60	870-**.**. **
	3.50	8.00	5.19	2.500	3.00	17.75	5.00	9.12	5.75	2.62	1.25	#16	82	872-**.**. **
	4.00	8.00	5.06	2.500	3.00	18.25	5.00	9.00	6.38	2.62	1.25	#16	107	874-**.**. **

Bore	Rod	A	B	CD	E	F	G	H	I	J	K	L	Maximum Stroke	Part #
8.00	3.50	9.00	6.50	3.000	4.00	22.00	6.00	10.69	7.44	3.12	1.50	#16	71	878-**.**. **
	4.00	9.00	6.50	3.000	4.00	22.00	6.00	10.69	7.44	3.12	1.50	#16	94	880-**.**. **
	4.50	9.00	6.50	3.000	4.00	22.00	6.00	10.69	7.44	3.12	1.50	#16	118	882-**.**. **

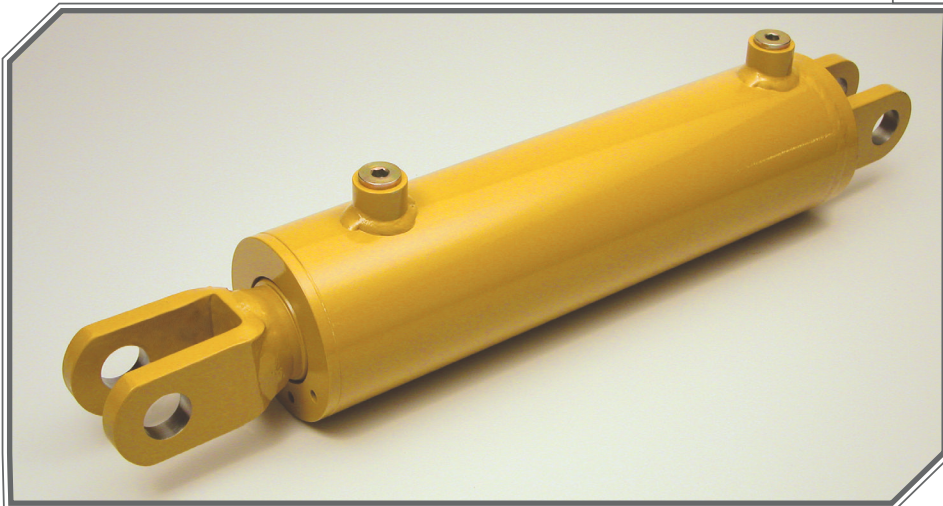
- Ordering Information:**
- **TO COMPLETE PART#:REPLACE (\*\*.\*\*\*) WITH STROKE REQUIRED**
  - OTHER PORT SIZES AND LOCATIONS ARE AVAILABLE UPON REQUEST
  - CONSULT FACTORY FOR LONGER STROKE AND OR HIGHER PRESSURE APPLICATIONS
  - MAXIMUM STROKE BASED ON FULL LOAD AT FULL EXTENSION



# 800 SERIES

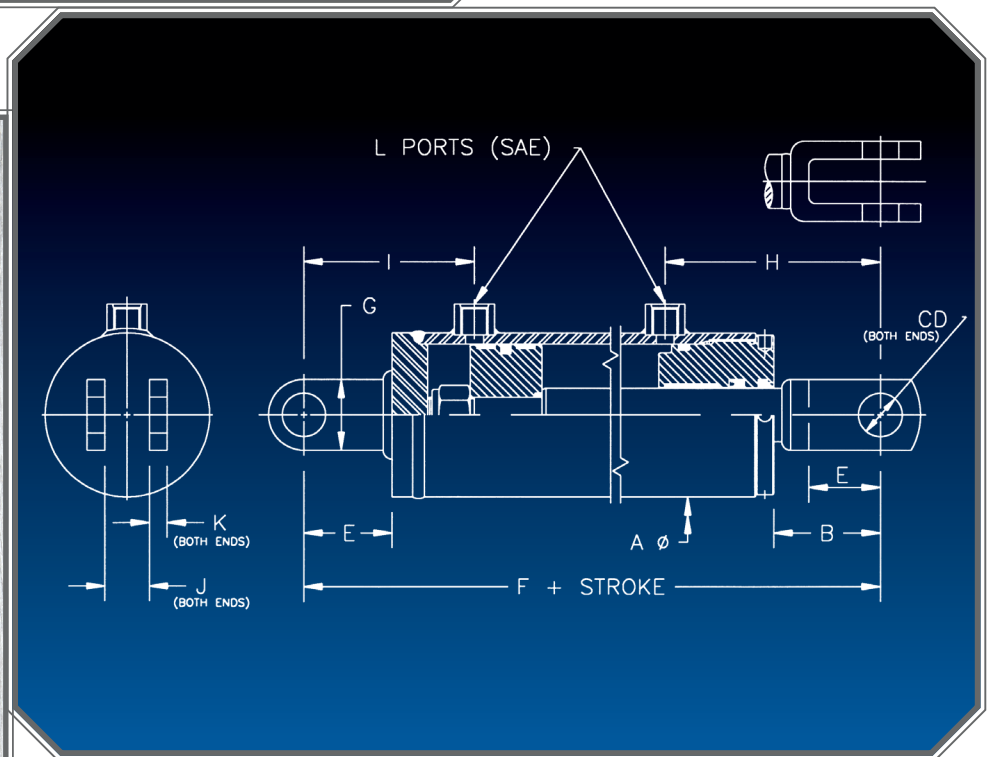
## CYLINDERS

3000 PSI HEAVY DUTY



### FEATURES

- COLD DRAWN (HIGH IMPACT) 75,000 MIN. YIELD D.O.M. TUBING
- GROUND & POLISHED, HARD CHROME PLATED RODS (75,000 min. yield)
- WELDED STYLE CONSTRUCTION CERTIFIED TO A.W.S. B2.1
- INTERNALLY THREADED HEAD DESIGN WITH BUTTRESS THREADS
- HIGHEST QUALITY SEAL CONFIGURATIONS (-40°F to +200°F) COMPATIBLE WITH PETROLEUM BASE FLUIDS
- DUCTILE IRON HEAD GLAND & PISTON
- PISTON UTILIZES WEAR BEARINGS
- NYLON INSERTED LOCK NUT
- STANDARD PAINT; GREY PRIMER



For Cylinders Engineered to move your Business Call Toll-free: (866) 406-4100



Bore	Rod	A	B	CD	E	F	G	H	I	J	K	L	M	Maximum Stroke	Part #
3.00	1.75	3.50	3.81	1.250	2.00	12.50	1.50	6.19	3.94	1.093	0.94	#6	2.00	47	904-**.**. **
	2.00	3.50	3.81	1.250	2.00	12.50	1.50	6.19	3.94	1.093	0.94	#6	2.00	53	906-**.**. **

Bore	Rod	A	B	CD	E	F	G	H	I	J	K	L	M	Maximum Stroke	Part #
3.50	1.75	4.00	3.94	1.250	2.00	12.75	1.50	6.38	4.00	1.093	0.94	#8	2.00	40	910-**.**. **
	2.00	4.00	3.75	1.250	2.00	12.75	1.50	6.19	4.19	1.093	0.94	#8	2.00	52	912-**.**. **

Bore	Rod	A	B	CD	E	F	G	H	I	J	K	L	M	Maximum Stroke	Part #
4.00	2.00	4.62	4.00	1.500	2.50	14.25	1.88	7.06	4.81	1.312	1.12	#8	2.25	46	916-**.**. **
	2.50	4.62	4.00	1.500	2.50	14.25	1.88	7.06	4.81	1.312	1.12	#8	2.25	72	918-**.**. **
	3.00	4.62	4.12	1.500	2.50	15.00	1.88	7.94	5.06	1.312	1.12	#8	2.25	99	920-**.**. **

Bore	Rod	A	B	CD	E	F	G	H	I	J	K	L	M	Maximum Stroke	Part #
4.50	2.00	5.12	4.00	1.500	2.50	14.50	1.88	7.12	5.00	1.312	1.12	#10	2.25	40	924-**.**. **
	2.50	5.12	4.00	1.500	2.50	14.75	1.88	7.12	5.25	1.312	1.12	#10	2.25	64	926-**.**. **
	3.00	5.12	4.00	1.500	2.50	14.75	1.88	7.12	5.25	1.312	1.12	#10	2.25	90	928-**.**. **
	3.50	5.12	4.00	1.500	2.50	15.00	1.88	7.88	5.12	1.312	1.12	#10	2.25	115	930-**.**. **

Bore	Rod	A	B	CD	E	F	G	H	I	J	K	L	M	Maximum Stroke	Part #
5.00	2.00	5.62	4.50	1.750	2.50	14.75	2.00	7.44	4.94	1.531	1.31	#12	2.50	36	934-**.**. **
	2.50	5.62	4.62	1.750	2.50	15.75	2.00	8.00	5.19	1.531	1.31	#12	2.50	57	936-**.**. **
	3.00	5.62	4.62	1.750	2.50	15.75	2.00	8.00	5.19	1.531	1.31	#12	2.50	82	938-**.**. **
	3.50	5.62	4.50	1.750	2.50	15.50	2.00	7.88	5.06	1.531	1.31	#12	2.50	108	940-**.**. **
	4.00	5.62	4.62	1.750	2.50	15.75	2.00	8.56	5.19	1.531	1.31	#12	2.50	130	942-**.**. **

Bore	Rod	A	B	CD	E	F	G	H	I	J	K	L	M	Maximum Stroke	Part #
5.50	2.50	6.12	4.69	1.750	2.50	16.00	2.00	8.06	5.25	1.531	1.31	#12	2.50	52	946-**.**. **
	3.00	6.12	4.56	1.750	2.50	15.75	2.00	7.94	5.12	1.531	1.31	#12	2.50	75	948-**.**. **
	3.50	6.12	4.56	1.750	2.50	15.75	2.00	7.94	5.12	1.531	1.31	#12	2.50	100	950-**.**. **
	4.00	6.12	4.69	1.750	2.50	16.00	2.00	8.06	5.25	1.531	1.31	#12	2.50	124	952-**.**. **
	4.50	6.12	4.56	1.750	2.50	16.50	2.00	8.50	5.88	1.531	1.31	#12	2.50	144	954-**.**. **

Bore	Rod	A	B	CD	E	F	G	H	I	J	K	L	M	Maximum Stroke	Part #
6.00	2.50	6.75	4.88	2.000	2.75	16.50	2.38	8.25	5.56	1.750	1.50	#12	2.75	48	958-**.**. **
	3.00	6.75	4.75	2.000	2.75	16.25	2.38	8.12	5.44	1.750	1.50	#12	2.75	70	960-**.**. **
	3.50	6.75	4.75	2.000	2.75	16.25	2.38	8.12	5.44	1.750	1.50	#12	2.75	94	962-**.**. **
	4.00	6.75	4.88	2.000	2.75	16.50	2.38	8.25	5.56	1.750	1.50	#12	2.25	120	964-**.**. **

Bore	Rod	A	B	CD	E	F	G	H	I	J	K	L	M	Maximum Stroke	Part #
7.00	2.50	8.00	5.69	2.500	3.25	18.50	3.00	9.62	6.00	2.188	1.88	#16	3.25	40	968-**.**. **
	3.00	8.00	5.69	2.500	3.25	18.50	3.00	9.62	6.00	2.188	1.88	#16	3.25	60	970-**.**. **
	3.50	8.00	5.69	2.500	3.25	18.50	3.00	9.62	6.00	2.188	1.88	#16	3.25	82	972-**.**. **
	4.00	8.00	5.56	2.500	3.25	19.00	3.00	9.50	6.62	2.188	1.88	#16	3.25	107	974-**.**. **

Bore	Rod	A	B	CD	E	F	G	H	I	J	K	L	M	Maximum Stroke	Part #
8.00	3.50	9.00	6.50	3.000	4.25	22.25	3.75	10.69	7.69	2.625	2.25	#16	4.25	70	978-**.**. **
	4.00	9.00	6.50	3.000	4.25	22.25	3.75	10.69	7.69	2.625	2.25	#16	4.25	94	980-**.**. **
	4.50	9.00	6.50	3.000	4.25	22.25	3.75	10.69	7.69	2.625	2.25	#16	4.25	118	982-**.**. **

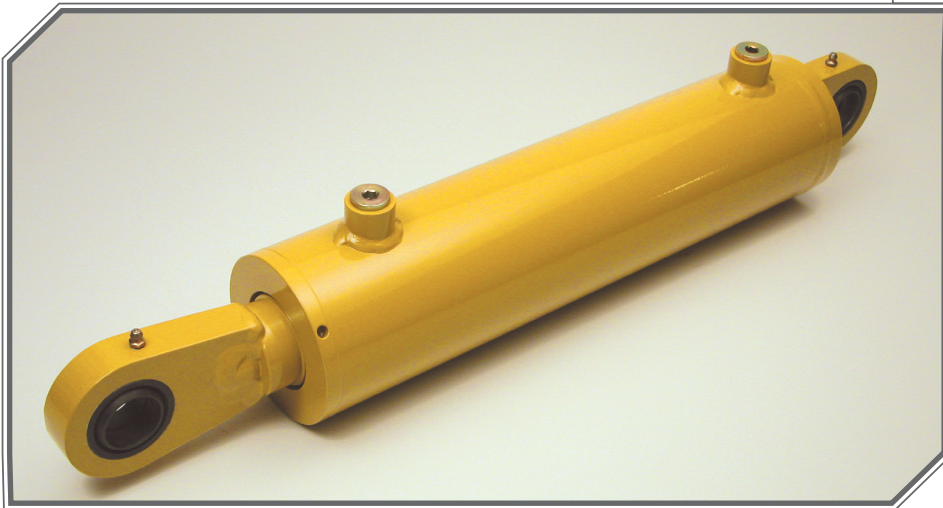
- Ordering Information:**
- **TO COMPLETE PART#:REPLACE (\*\*.\*\*) WITH STROKE REQUIRED**
  - OTHER PORT SIZES AND LOCATIONS ARE AVAILABLE UPON REQUEST
  - CONSULT FACTORY FOR LONGER STROKE AND OR HIGHER PRESSURE APPLICATIONS
  - MAXIMUM STROKE BASED ON FULL LOAD AT FULL EXTENSION



# 900 SERIES

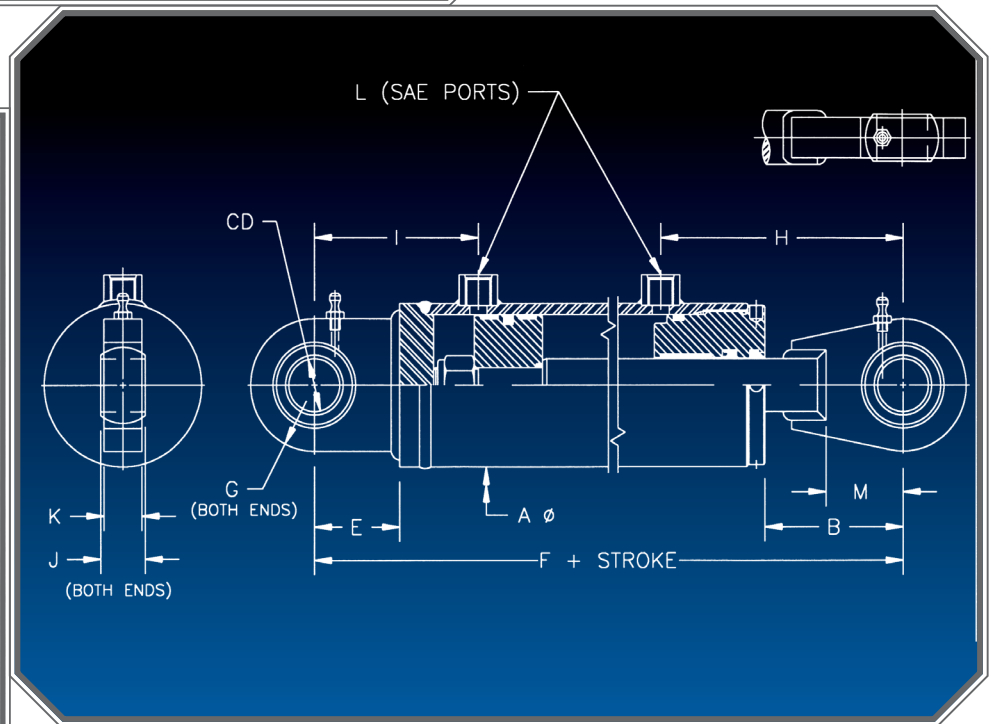
## CYLINDERS

3000 PSI HEAVY DUTY



### FEATURES

- COLD DRAWN (HIGH IMPACT) 75,000 MIN. YIELD D.O.M. TUBING
- GROUND & POLISHED, HARD CHROME PLATED RODS (75,000 min. yield)
- WELDED STYLE CONSTRUCTION CERTIFIED TO A.W.S. B2.1
- INTERNALLY THREADED HEAD DESIGN WITH BUTTRESS THREADS
- HIGHEST QUALITY SEAL CONFIGURATIONS (-40°F to +200°F) COMPATIBLE WITH PETROLEUM BASE FLUIDS
- DUCTILE IRON HEAD GLAND & PISTON
- PISTON UTILIZES WEAR BEARINGS
- NYLON INSERTED LOCK NUT
- STANDARD PAINT; GREY PRIMER



For Cylinders Engineered to move your  
Business Call Toll-free: (866) 406-4100





#### CYLINDER WARRANTY

AGGRESSIVE HYDRAULICS INCORPORATED WARRANTS THAT IT'S HYDRAULIC CYLINDER WILL BE FREE FROM DEFECTS IN MATERIALS AND WORKMANSHIP FOR A PERIOD OF ONE (1) YEAR FROM THE DATE OF SHIPMENT. BUYER'S REMEDY FOR DEFECTIVE PRODUCTS SHALL BE LIMITED TO REPAIR, REPLACEMENT, OR CREDIT AT AGGRESSIVE HYDRAULICS INCORPORATED OPTION. WARRANTY CLAIMS MUST BE PRESENTED WITHIN 30 DAYS OF DEFECT DISCOVERY. PRODUCTS MUST BE RETURNED TO AGGRESSIVE HYDRAULICS, FREIGHT PREPAID.

THIS WARRANTY DOES NOT APPLY TO CYLINDERS WHICH HAVE BEEN SUBJECT TO IMPROPER APPLICATION, DAMAGE, OR REPAIR.

#### MAINTENANCE REQUIREMENTS

PACKING, WIPERS, AND BUSHINGS ARE SUBJECT TO CONTAMINATION FROM DIRT AND OTHER FOREIGN MATERIALS, INTERNAL AND EXTERNAL TO THE HYDRAULIC SYSTEM. WARRANTY CLAIMS FOR THE ABOVE ITEMS WHICH UPON INSPECTION ARE FOUND TO BE DUE TO ABNORMAL WEAR OR LACK OF MAINTENANCE RATHER THAN DEFECTIVE MANUFACTURE WILL NOT BE HONORED.

THIS WARRANTY IS THE ONLY WARRANTY APPLICABLE AND EXCLUDES ALL OTHER WARRANTIES, EXPRESSED OR IMPLIED (MERCHANTABILITY, FITNESS FOR PARTICULAR PURPOSE OR OTHER). UNDER NO CIRCUMSTANCES WILL AGGRESSIVE HYDRAULICS **INCORPORATED** OBLIGATION HEREUNDER INCLUDE LABOR CHARGES OR CONSEQUENTIAL OR INCIDENTAL DAMAGES









The image features several 3D CAD models of hydraulic components, including a large cylindrical assembly with a mesh overlay, a smaller cylindrical component with a hex nut, and a complex bracket-like part with two circular openings. The models are rendered in a bright yellow color with realistic shading and reflections on a light gray surface.

YOUR BEST RESOURCE FOR  
WORLD-CLASS HYDRAULIC PRODUCTS



P.O. Box 187 • 18800 Ulysses Street NE • Cedar, MN 55011  
• toll free 866-406-4100 • phone 763-792-4000 • fax 763-792-4400  
• sales@aggressivehydraulics.com • www.aggressivehydraulics.com